

Locks



Locks

OUTLETS NATIONWIDE

500

Locks

Now it's easy to find just the right padlock for any security application. Choose from a wide selection of padlocks suitable for medium to high quality insurance quality and suitable

for indoor and outdoor use. For doors around the home we offer a complete range of matched mortice locks, lock sets and handles plus a selection of miscellaneous locks and

accessories suitable for hundreds of uses around the home.



Padlocks



Padlock Accessories



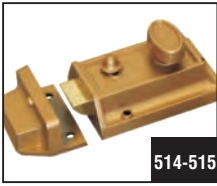
Mortice Locks



Door Handles & Knobs



Entrance Locks



Night Latches



Security Locks



Miscellaneous Locks & Accessories



Lock Blockers & Keys



IRON PADLOCKS

- A standard grade padlock iron construction
- Chromium plated shackle
- Suitable for indoor application or where there is little moisture



| Code | Size |
|---------|------|
| HON4990 | 20mm |
| HON4992 | 25mm |
| HON4994 | 32mm |
| HON4996 | 38mm |
| HON4998 | 50mm |
| HON5000 | 63mm |



IRON PADLOCKS

- A premium grade brass padlock
- Hardened shackle
- Chromium plated shackle
- Double shackle latches
- Solid Brass cylinder plug with rim and anti-picking device
- With 3 keys
- Suitable for outdoor applications where resistance to the elements is important



| Code | Size | Code | Size |
|---------|------|---------|------|
| TRC0005 | 20mm | TRC0020 | 38mm |
| TRC0010 | 25mm | TRC0025 | 50mm |
| TRC0015 | 32mm | TRC0030 | 63mm |



BRASS PADLOCKS

- A premium grade padlock of solid brass construction
- Chromium plated shackle
- Suitable for outdoor applications where resistance to the elements is important



| Code | Size |
|---------|------|
| HON5005 | 20mm |
| HON5007 | 25mm |
| HON5009 | 32mm |
| HON5011 | 38mm |
| HON5013 | 50mm |
| HON5015 | 63mm |



BRASS PADLOCKS

- A premium grade brass padlock
- Hardened shackle
- Chromium plated shackle
- Double shackle latches
- Solid Brass cylinder plug with rim and anti-picking device
- With 3 keys
- Suitable for outdoor applications where resistance to the elements is important



| Code | Size | Code | Size |
|---------|------|---------|------|
| TRC0035 | 20mm | TRC0050 | 38mm |
| TRC0040 | 25mm | TRC0055 | 50mm |
| TRC0045 | 32mm | TRC0060 | 63mm |



BRASS PADLOCKS

- Diamond shape solid brass
- Are available in an extensive range of sizes depending on the application
- From small stylish luggage locks, up to 70mm for heavy duty applications
- The larger sizes are ideal for securing gates, workshops and sheds
- 2 keys per lock



| Code | Size | Ref | Code | Size | Ref |
|---------|------|----------|---------|------|----------|
| MAS1200 | 20mm | MA205326 | MAS1600 | 50mm | MA205344 |
| MAS1280 | 30mm | MA205329 | MAS1750 | 60mm | MA205346 |
| MAS1400 | 40mm | MA205335 | MAS1800 | 70mm | MA205347 |



BRASS PADLOCKS KEYED ALIKE

- A premium grade brass padlock
- Hardened shackle
- Chromium plated shackle
- Double shackle latches
- Solid Brass cylinder plug with rim and anti-picking device
- Suitable for outdoor applications where resistance to the elements is important



| Code | Size |
|---------|------|
| TRC0145 | 32mm |
| TRC0150 | 38mm |
| TRC0155 | 50mm |



BRASS PADLOCKS KEYED ALIKE

- Diamond shape solid brass
- They are available in an extensive range of sizes depending on the application
- The larger sizes are ideal for securing gates, workshops and sheds
- One key opens all padlocks in the set



| Code | Ref | Size | Packs |
|---------|----------|------|---------|
| MAS1190 | MA205768 | 15mm | 3 locks |
| MAS1240 | MA208003 | 20mm | 4 locks |
| MAS1310 | MA205744 | 30mm | 2 locks |
| MAS1320 | MA205772 | 30mm | 4 locks |
| MAS1460 | MA205342 | 40mm | 2 locks |
| MAS1470 | MA207768 | 40mm | 4 locks |
| MAS1480 | MA400020 | 40mm | 6 locks |
| MAS1640 | MA400052 | 50mm | 2 locks |
| MAS1660 | MA400053 | 50mm | 4 locks |

Master Lock BRASS PADLOCKS LONG SHACKLE

- Diamond shape solid brass
- Standard body with a longer shackle height
- Larger sizes are ideal for securing gates, workshops and sheds
- 2 keys per lock
- **MAS1680** - Removable and adjustable hardened steel shackle, adjusts from 70mm to 155mm



| Code | Ref | Size | Shackle Clearance |
|---------|----------|------|-------------------|
| MAS1510 | MA203541 | 40mm | 38mm |
| MAS1680 | MA300039 | 50mm | 70mm-155mm |
| MAS1685 | MA205345 | 50mm | 64mm |



BRASS PADLOCKS LONG SHACKLE

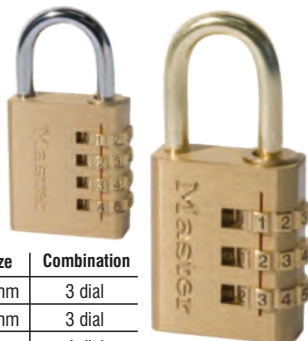
- A premium grade brass padlock
- Hardened shackle
- Chromium plated shackle
- Double shackle latches
- Solid Brass cylinder plug with rim and anti-picking device
- With 3 keys
- Suitable for outdoor applications where resistance to the elements is important



| Code | Size |
|---------|------|
| TRC0090 | 32mm |
| TRC0095 | 38mm |
| TRC0100 | 50mm |

Master Lock BRASS COMBINATION PADLOCKS

- Solid brass body for strength and weather-ability
- Set your own combination
- Resettable to allow for a personalized combination



| Code | Ref | Size | Combination |
|---------|----------|------|-------------|
| MAS1230 | MA207771 | 20mm | 3 dial |
| MAS1290 | MA207772 | 30mm | 3 dial |
| MAS1430 | MA300060 | 40mm | 4 dial |



BRASS INSURANCE PADLOCKS

- Top quality solid brass padlock with superior security rating
- Extremely difficult to cut or break
- Ideal for outdoor use and high protection



| Code | Size |
|---------|------|
| HON5018 | 65mm |

Master Lock BRASS INSURANCE PADLOCKS

- Solid brass body, with horizontal hardened steel shackle
- Horizontal security locking makes the shackle difficult to attack
- 2 keys per lock



| Code | Ref | Size |
|---------|----------|------|
| MAS1090 | MA205349 | 76mm |
| MAS1080 | MA205766 | 85mm |



STAINLESS STEEL INSURANCE PADLOCKS

- Top quality solid brass padlock with superior security rating
- Extremely difficult to cut or break
- Ideal for outdoor use and high protection



| Code | Size |
|---------|------|
| HON5020 | 70mm |
| HON5080 | 80mm |

Master Lock STAINLESS STEEL SPIN DIAL COMBINATION PADLOCK

- Double-armored stainless steel body
- Hardened steel shackle for extra cut resistance
- 3 digit dialing



| Code | Ref | Size |
|---------|----------|------|
| MAS1530 | MA205386 | 48mm |



DISCUS PADLOCK

- Rust proof, stainless steel construction
- Resists attack from bolt cutters and saws due to its shape
- Ideal for outdoor use and higher protection



| Code | Size |
|---------|------|
| MTS3588 | 70mm |



PADLOCK - HIGH SECURITY - DISCUS RH5/218B

- A strong security lock manufactured to withstand hard use for indoors or outdoors and provides dependable protection
- Tough, corrosion resistant stainless steel outer case with brass cylinder and high security pin tumbler locking mechanism
- Rugged steel shackle, is case hardened for resistance to cutting and sawing
- Chrome plated
- Complete with 2 precision cut nickel plated brass keys



| Code | Size |
|---------|------|
| RIC2300 | 70mm |

Master Lock DISCUS PADLOCK

- Shielded lock design minimizes shackle exposure, making it less vulnerable to cutting and sawing
- Hardened double locking shackle
- Stainless steel body resists corrosion
- Special order keyed-alike available
- 2 keys per lock



| Code | Ref | Size |
|---------|----------|------|
| MAS1830 | MA205394 | 70mm |

Master Lock DISCUS PADLOCK - HIGH SECURITY EXCELL

- Stainless steel body
- Octagonal boron-carbide shrouded shackles 50% stronger
- 4 keys per lock



| Code | Ref | Size |
|---------|----------|------|
| MAS2150 | MA450020 | 70mm |

Master Lock HIGH SECURITY LAMINATED STEEL PADLOCKS EXCELL

- Laminated steel case, with stainless steel and zinc cover
- Octagonal boron-carbide shackles 50% stronger
- Dual ball bearing locking 50% more pull strength
- 4 keys per lock



| Code | Ref | Size | Clearance |
|---------|----------|------|-----------|
| MAS2100 | MA450000 | 45mm | 38mm |
| MAS2110 | MA450004 | 50mm | 24mm |

Master Lock HIGH SECURITY LAMINATED WEATHERPROOF PADLOCKS EXCELL

- Laminated steel case, with thermoplastic weather proof cover
- Octagonal boron-carbide shackles 50% stronger
- Dual ball bearing locking 50% more pull strength 4 keys per lock



| Code | Ref | Size | Clearance |
|---------|----------|------|-----------|
| MAS2140 | MA450015 | 50mm | 38mm |
| MAS2160 | MA450017 | 64mm | 51mm |

Master Lock HIGH SECURITY LAMINATED STEEL KEYED-ALIKE PADLOCK PACKS EXCELL

- Laminated steel case, with stainless steel and zinc cover
- Octagonal boron-carbide shackles 50% stronger
- Dual ball bearing locking 50% more pull strength
- One key opens all padlocks in the set



| Code | Ref | Size | Pack |
|---------|----------|------|---------|
| MAS2120 | MA450002 | 45mm | 3 locks |

Master Lock LAMINATED STEEL PADLOCK EXCELL

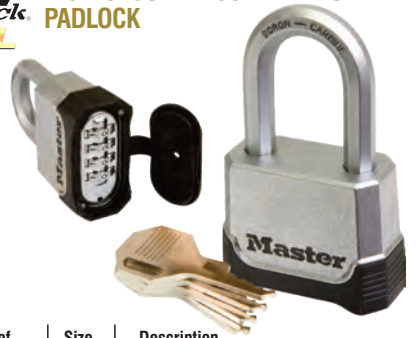
- Wide laminated steel body for superior strength with hardened steel shackle
- Dual locking levers for extra pry resistance
- Hardened bottom plate for drill resistance



| Code | Ref | Size |
|---------|----------|------|
| MAS1490 | MA205294 | 44mm |

Master Lock HIGH SECURITY COMBINATION PADLOCK EXCELL

- Chrome-plated zinc die-cast body for corrosion resistance
- Octagonal boron-carbide shackle 50% stronger
- Covered dials for superior weather protection

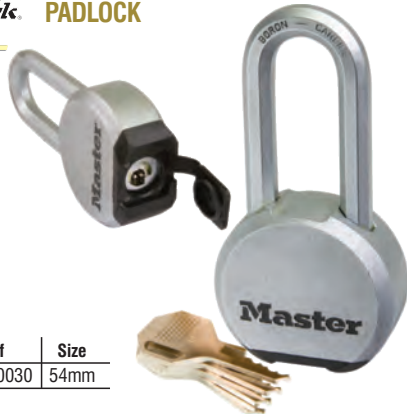


| Code | Ref | Size | Description |
|---------|----------|------|-----------------|
| MAS2125 | MA450035 | 50mm | Die cast 4 dial |

Master Lock EXCELL

HIGH SECURITY SOLID STEEL PADLOCK

- Chrome-plated solid steel body for corrosion resistance
- Octagonal boron-carbide shackles 50% stronger
- Dual ball bearing locking 50% more pull strength
- 4 keys per lock



| Code | Ref | Size |
|---------|----------|------|
| MAS2130 | MA450030 | 54mm |

Master Lock EXCELL

HIGH SECURITY BRASS FINISH PADLOCKS

- Laminated steel case, and zinc cover with brass finish
- Octagonal boron-carbide shackles 50% stronger
- Dual ball bearing locking 50% more pull strength
- 4 keys per lock



| Code | Ref | Size | Clearance |
|---------|----------|------|-----------|
| MAS2165 | MA455000 | 45mm | 20mm |
| MAS2170 | MA455002 | 45mm | 38mm |
| MAS2175 | MA455003 | 50mm | 24mm |
| MAS2180 | MA455008 | 64mm | 38mm |

Master Lock CABLE COMBINATION LOCK

- Combination resettable
- Braided steel wires for strength and flexibility
- Galvanized steel cable resists cutting
- Vinyl coating helps prevent rusting



| Code | Ref | Size |
|---------|----------|-------------|
| MAS1020 | MA300034 | 1.5m x 10mm |

Master Lock CABLE LOCK

- Self coiling steel cable
- Vinyl coating helps prevent rusting
- Assorted colours



| Code | Ref | Size |
|---------|----------|------------|
| MAS1000 | MA300019 | 1.8m x 8mm |

Master Lock CABLE ONLY

- Braided steel wires for strength and flexibility
- Convenient loops with rust-resistant sleeves and scratch guards
- Galvanized steel cable resists cutting
- Vinyl coating helps prevent rusting



| Code | Ref | Size |
|---------|----------|-------------|
| MAS1050 | MA300031 | 1.8m x 10mm |

Master Lock HIGH SECURITY CHAINS

- Hardened steel, square link
- Vinyl protective cover
- 5 Times stronger



| Code | Ref | Size |
|---------|----------|------------|
| MAS2185 | MA823050 | 1.5m x 6mm |
| MAS2190 | MA823080 | 1m x 8mm |

Master Lock LOCKOUT HASPS - STEEL

- Lockout multiple workers at each point
- Steel jaw with vinyl coated handle



| Code | Ref | Size |
|---------|----------|------|
| MAS1094 | MA205396 | 25mm |
| MAS1096 | MA205397 | 38mm |

MACKIE REBATE KITS

- Manufactured from Zinc/Steel
- For standard Mortice lock
- Door closer for hollow core doors



| Code | Descr |
|----------|---------------|
| MAK30627 | Brass Plated |
| MAK30634 | Chrome Plated |



MORTICE DOOR LOCKS & HANDLES

- Professional door lock with furniture
- Solid brass latch and bolt
- Pressed heavy duty stainless steel handles
- 3 keys
- Complete with all fixing screws



| Code | Rating | Finish |
|---------|---------|---------|
| MAS6050 | 2 Lever | S/Steel |
| MAS6060 | 3 Lever | S/Steel |
| MAS6070 | 4 Lever | S/Steel |



MORTICE DOOR LOCKS & HANDLES

- Professional door lock with furniture
- Solid brass latch and bolt
- Die cast heavy duty handles
- 3 keys
- Complete with all fixing screws



| Code | Rating | Finish |
|---------|---------|--------|
| MAS6000 | 2 Lever | C.P. |
| MAS6020 | 3 Lever | C.P. |



MORTICE LOCKSETS WITH LIGHT DUTY PRESSED PLATE HANDLE - PRO SERIES

- Pro-Series Mortice Locksets including Pressed Plate Handles are designed and produced to meet the SABS Standards and carry the SABS Certification Mark (On the Lock Insert Only)
- Offer an affordable alternative for Low Cost housing projects, where it is stipulated that only the lock need bare the SABS Mark
- They are supplied in Chrome Plated finish. The locks come in 2, 3, and 4 Lever variants which are supplied with 2 keys each, which match the Local Y, CD series
- Forend Chrome plated

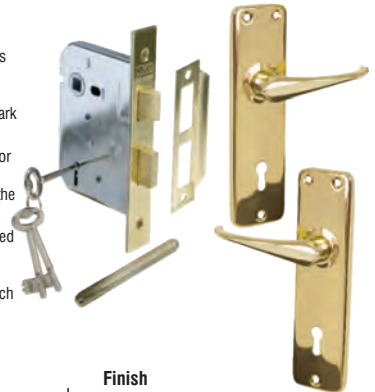


| Code | Size | Description | Finish For Handle |
|----------|------|-------------|-------------------|
| MAK17208 | 76mm | 2 Lever | Chrome Plated |
| MAK05717 | 76mm | 3 Lever | Chrome Plated |
| MAK06844 | 76mm | 4 Lever | Chrome Plated |



MORTICE LOCKSETS WITH LIGHT DUTY PRESSED PLATE HANDLE - PRO SERIES

- Pro-Series Mortice Locksets including Pressed Plate Handles are designed and produced to meet the SABS Standards and carry the SABS Certification Mark (On the Lock Insert Only)
- Offer an affordable alternative for Low Cost housing projects, where it is stipulated that only the lock need bare the SABS Mark
- They are supplied in Brass Plated finish. The locks come in 2, 3, and 4 Lever variants which are supplied with 2 keys each, which match the Local Y, CD series
- Forend Brass plated



| Code | Size | Description | Finish For Handle |
|----------|------|-------------|-------------------|
| MAK19820 | 76mm | 2 Lever | Brass Plated |
| MAK19707 | 76mm | 3 Lever | Brass Plated |



MORTICE LOCKSETS - EXTRA HEAVY DUTY DIE CAST HANDLES - COMMERCIAL

- Commercial Mortice Locksets including Extra Heavy Duty Handles are designed and produced to meet the SABS Standards and carry the SABS Certification Mark
- Offer a loose forend which allows the installer to install the locks prior to the finishing of the doors and to return simply to put on the forend offering a professional paint free installation
- Supplied with 3 keys, which match the Local Y, CD series
- Forend Stainless steel



| Code | Size | Description | Finish For Handle |
|----------|------|-------------|-------------------|
| MAK19790 | 76mm | 2 Lever | Chrome Plated |
| MAK19806 | 76mm | 3 Lever | Chrome Plated |
| MAK19813 | 76mm | 4 Lever | Chrome Plated |



MORTICE LOCKSETS - EXTRA HEAVY DUTY DIE CAST HANDLES - COMMERCIAL

- Commercial Mortice Locksets including Extra Heavy Duty Handles are designed and produced to meet the SABS Standards and carry the SABS Certification Mark
- Offer a loose forend which allows the installer to install the locks prior to the finishing of the doors and to return simply to put on the forend offering a professional paint free installation
- Supplied with 3 keys, which match the Local Y, CD series
- Forend Stainless steel



| Code | Size | Description | Finish For Handle |
|----------|------|-------------|-------------------|
| MAK17321 | 76mm | 2 Lever | Satin Chrome |
| MAK17338 | 76mm | 3 Lever | Satin Chrome |



MORTICE LOCKSETS - WITH EXTRA HEAVY DUTY ALUMINIUM HANDLES - COMMERCIAL

- Commercial Mortice Locksets including Extra Heavy Duty Handles are designed and produced to meet the SABS Standards and carry the SABS Certification Mark
- Offer a lose forend which allows the installer to install the locks prior to the finishing of the doors and to return simply to put on the forend thus offering a professional paint free installation
- Supplied with 3 keys, which match the Local Y, CD series
- Forend Stainless steel



| Code | Size | Description | Finish For Handle |
|----------|------|-------------|-------------------|
| MAK18953 | 76mm | 3 Lever | Satin Anodised |



CYLINDER MORTICE LOCKSET - PROFILE WITH HEAVY DUTY ALUMINIUM HANDLES

- Handle heavy duty aluminium



| Code | Forend Finish | Body Finish | Handle Finish |
|----------|---------------|-------------|---------------|
| MAK19875 | Chrome Plated | Galvanised | Anodised |



CYLINDER MORTICE LOCKSET - PROFILE WITH PRESSED PLATE HANDLES

- Handle light duty steel pressed



| Code | Forend Finish | Body Finish | Handle Finish |
|----------|---------------|-------------|---------------|
| MAK19868 | Chrome Plated | Galvanised | Chrome Plated |



CYLINDER MORTICE LOCKSET - PROFILE WITH PRESSED PLATE HANDLES

- Handle light duty steel pressed



| Code | Forend Finish | Body Finish | Handle Finish |
|----------|----------------|-------------|---------------|
| MAK19851 | Polished Brass | Galvanised | Brass Plated |



CLASSIC STRAIGHT HANDLE & PREMIUM MORTICE LOCK COMBO SETS

- Satin Chrome Handle Combo sets are a combination of the SABS Approved Premium Mortice Lock sets and their High Quality Satin Chrome Straight Handles



| Code | Description | Type | Handle Finish |
|----------|--------------------------|---------|---------------|
| MAK19981 | Victorian Straight Plate | 2 Lever | Satin Chrome |
| MAK19998 | Victorian Straight Plate | 3 Lever | Satin Chrome |



CLASSIC BRASS STRAIGHT HANDLE & PREMIUM MORTICE LOCK COMBO SETS

- Brass Handle Combo sets are a combination of the SABS Approved Premium Mortice Lock sets and their High Quality Brass Straight Handles



| Code | Description | Type | Handle Finish |
|----------|--------------------------|------------------|---------------|
| MAK13927 | Victorian Straight Plate | Profile Cylinder | Solid Brass |



CLASSIC BRASS STRAIGHT HANDLE & PREMIUM MORTICE LOCK COMBO SETS

- Brass Handle Combo sets are a combination of the SABS Approved Premium Mortice Lock sets and their High Quality Brass Straight Handles



| Code | Description | Type | Handle Finish |
|----------|--------------------------|---------|---------------|
| MAK13897 | Victorian Straight Plate | 2 Lever | Solid Brass |



CLASSIC SCROLL HANDLE & PREMIUM MORTICE LOCK COMBO SETS

- Satin Chrome Handle Combo sets are a combination of the SABS Approved Premium Mortice Lock sets and their High Quality Satin Chrome Scroll Handles



| Code | Description | Type | Handle Finish |
|----------|--------------------------|------------------|---------------|
| MAK20017 | Victorian Straight Plate | Profile Cylinder | Satin Chrome |



CLASSIC BRASS SCROLL HANDLE & PREMIUM MORTICE LOCK COMBO SETS

- Brass Handle Combo sets are a combination of the SABS Approved Premium Mortice Lock sets and their High Quality Brass Scroll Handles



| Code | Description | Type | Handle Finish |
|----------|--------------------------|---------|---------------|
| MAK13859 | Victorian Straight Plate | 2 Lever | Solid Brass |
| MAK13866 | Victorian Straight Plate | 3 Lever | Solid Brass |



CLASSIC BRASS SCROLL HANDLE & PREMIUM MORTICE LOCK COMBO SETS

- Brass Handle Combo sets are a combination of the SABS Approved Premium Mortice Lock sets and their High Quality Brass Scroll Handles



| Code | Description | Type | Handle Finish |
|----------|--------------------------|------------------|---------------|
| MAK13880 | Victorian Straight Plate | Profile Cylinder | Solid Brass |



CLASSIC SCROLL HANDLE & PREMIUM MORTICE LOCK COMBO SETS

- Satin Chrome Handle Combo sets are a combination of the SABS Approved Premium Mortice Lock sets and their High Quality Satin Chrome Scroll Handles



| Code | Description | Type | Handle Finish |
|----------|--------------------------|---------|---------------|
| MAK19943 | Victorian Straight Plate | 2 Lever | Satin Chrome |
| MAK19950 | Victorian Straight Plate | 3 Lever | Satin Chrome |



CLASSIC BRASS HANDLE & MORTICE LOCK COMBO SETS

- Brass Handle Combo sets are a combination of the SABS Approved Premium Mortice Lock sets and their High Quality Brass Scroll Handles



| Code | Description | Type | Handle Finish |
|----------|-------------------------|---------|---------------|
| MAK19318 | Georgian Straight Plate | 2 Lever | Solid Brass |
| MAK19325 | Georgian Straight Plate | 3 Lever | Solid Brass |



CLASSIC BRASS HANDLE & MORTICE LOCK COMBO SETS

- Brass Handle Combo sets are a combination of the SABS Approved Premium Mortice Lock sets and their High Quality Brass Scroll Handles



| Code | Description | Type | Handle Finish |
|----------|-------------------------|------------------|---------------|
| MAK19349 | Georgian Straight Plate | Profile Cylinder | Solid Brass |



CLASSIC SCROLL HANDLE & PREMIUM MORTICE LOCK COMBO SETS

- Satin Chrome Handle Combo sets are a combination of the SABS Approved Premium Mortice Lock sets and their High Quality Satin Chrome Scroll Handles



| Code | Description | Type | Handle Finish |
|----------|-------------------------|------------------|---------------|
| MAK19974 | Georgian Straight Plate | Profile Cylinder | Satin Chrome |



CLASSIC BRASS SCROLL HANDLE & PREMIUM MORTICE LOCK COMBO SETS

- Brass Handle Combo sets are a combination of the SABS Approved Premium Mortice Lock sets and their High Quality Brass Scroll Handles



| Code | Description | Type | Handle Finish |
|----------|-----------------------|---------|---------------|
| MAK13811 | Victorian Gable Plate | 2 Lever | Solid Brass |
| MAK13828 | Victorian Gable Plate | 3 Lever | Solid Brass |



CLASSIC BRASS SCROLL HANDLE & PREMIUM MORTICE LOCK COMBO SETS

- Brass Handle Combo sets are a combination of the SABS Approved Premium Mortice Lock sets and their High Quality Brass Scroll Handles



| Code | Description | Type | Handle Finish |
|----------|-----------------------|------------------|---------------|
| MAK13842 | Victorian Gable Plate | Profile Cylinder | Solid Brass |



CLASSIC SCROLL HANDLE & PREMIUM MORTICE LOCK COMBO SETS

- Satin Chrome Handle Combo sets are a combination of the SABS Approved Premium Mortice Lock sets and their High Quality Satin Chrome Scroll Handles



| Code | Description | Type | Handle Finish |
|----------|-----------------------|---------|---------------|
| MAK19677 | Victorian Gable Plate | 3 Lever | Satin Chrome |



CLASSIC SCROLL HANDLE & PREMIUM MORTICE LOCK COMBO SETS

- Satin Chrome Handle Combo sets are a combination of the SABS Approved Premium Mortice Lock sets and their High Quality Satin Chrome Scroll Handles



| Code | Description | Type | Handle Finish |
|----------|-----------------------|------------------|---------------|
| MAK19691 | Victorian Gable Plate | Profile Cylinder | Satin Chrome |

Locks



CLASSIC BRASS SCROLL HANDLE & PREMIUM MORTICE LOCK COMBO SETS

- Brass Handle Combo sets are a combination of the SABS Approved Premium Mortice Lock sets and their High Quality Brass Scroll Handles



| Code | Description | Type | Handle Finish |
|----------|----------------------|---------|---------------|
| MAK13941 | Georgian Gable Plate | 3 Lever | Brass Plated |



CLASSIC BRASS SCROLL HANDLE & PREMIUM MORTICE LOCK COMBO SETS

- Brass Handle Combo sets are a combination of the SABS Approved Premium Mortice Lock sets and their High Quality Brass Scroll Handles



| Code | Description | Type | Handle Finish |
|----------|----------------------|------------------|---------------|
| MAK13965 | Georgian Gable Plate | Profile Cylinder | Brass Plated |



MORTICE LOCK ONLY INSERTS - PREMIUM (SABS)

- Designed and produced to meet the SABS Standards and carry the SABS Certification Mark
- Offer a lose forend which allows the installer to install the locks prior to the finishing of the doors and to return simply to put on the forend thus offering a professional paint free installation
- Supplied with 3 keys which match the Local Y, CD series



| Code | Size | Description | Body Finish |
|----------|------|-------------|---------------------|
| MAK13972 | 76mm | 2 Lever | Brass Plated Forend |
| MAK13989 | 76mm | 3 Lever | Brass Plated Forend |
| MAK13996 | 76mm | 4 Lever | Brass Plated Forend |



MORTICE LOCK ONLY INSERTS - PREMIUM (SABS)

- Designed and produced to meet the SABS Standards and carry the SABS Certification Mark
- Offer a lose forend which allows the installer to install the locks prior to the finishing of the doors and to return simply to put on the forend thus offering a professional paint free installation
- Supplied with 3 keys which match the Local Y, CD series



| Code | Size | Description | Body Finish |
|----------|------|-------------|----------------------|
| MAK05540 | 76mm | 2 Lever | Chrome Plated Forend |
| MAK05762 | 76mm | 3 Lever | Chrome Plated Forend |
| MAK05779 | 76mm | 4 Lever | Chrome Plated Forend |



CYLINDER MORTICE LOCK - INSERT ONLY WITH CYLINDER

- Designed and produced to meet the SABS Standards and carry the SABS Certification Mark
- Offer a lose forend which allows the installer to install the locks prior to the finishing of the doors and to return simply to put on the forend thus offering a professional paint free installation
- Supplied with 3 matching keys



| Code | Forend Finish | Body Finish |
|----------|---------------|--------------|
| MAK14009 | Galvanised | Brass Plated |



CYLINDER MORTICE LOCK - INSERT ONLY WITH CYLINDER

- Designed and produced to meet the SABS Standards and carry the SABS Certification Mark
- Offer a lose forend which allows the installer to install the locks prior to the finishing of the doors and to return simply to put on the forend thus offering a professional paint free installation
- Supplied with 3 matching keys



| Code | Forend Finish | Body Finish |
|----------|---------------|-------------|
| MAK30689 | Chrome Plated | Galvanised |



STANDARD DOOR HANDLES

- Manufactured to industry standards and are supplied in Light Duty Pressed Plate (Non-SABS)
- Heavy Duty Die Cast Zinc (SABS) or Heavy Duty Aluminium
- Available in Keyhole or Profile Cylinder cut out
- Handles are supplied with the requisite size and amount of fixing screws

| Code | Description | Cut Out | Finish |
|----------|--------------------------|------------------|----------------|
| MAK13729 | Light Duty Pressed Plate | Keyhole | Brass Plated |
| MAK05724 | Light Duty Pressed Plate | Keyhole | Chrome Plated |
| MAK19882 | Heavy Duty Die Cast Zinc | Keyhole | Chrome Plated |
| MAK13736 | Heavy Duty Aluminium | Keyhole | Satin Anodised |
| MAK19936 | Heavy Duty Aluminium | Profile Cylinder | Satin Anodised |



MAK13729



MAK05724



MAK19882



MAK13736



MAK19936



CLASSIC DOOR HANDLES VICTORIAN PATTERN

- Range is manufactured from the highest quality materials to original industry standards and sizes
- With keyhole or profile cylinder cut out
- All handles are supplied complete with spindles and the requisite fastenings

STRAIGHT HANDLES

| Code | Description | Cut Out | Finish |
|----------|--------------------------|------------------|--------------|
| MAK18847 | Victorian Straight Plate | Profile Cylinder | Solid Brass |
| MAK11541 | Victorian Straight Plate | Keyhole | Solid Brass |
| MAK23001 | Victorian Straight Plate | Profile Cylinder | Satin Chrome |
| MAK22998 | Victorian Straight Plate | Keyhole | Satin Chrome |



MAK18847



MAK11541



MAK23001



MAK22998



MAK18823



MAK11534



MAK22981



MAK22974



MAK18809



MAK11527



MAK22967



MAK22950

SCROLL HANDLES

| Code | Description | Cut Out | Finish |
|----------|--------------------------|------------------|--------------|
| MAK18823 | Victorian Straight Plate | Profile Cylinder | Solid Brass |
| MAK11534 | Victorian Straight Plate | Keyhole | Solid Brass |
| MAK22981 | Victorian Straight Plate | Profile Cylinder | Satin Chrome |
| MAK22974 | Victorian Straight Plate | Keyhole | Satin Chrome |

SCROLL HANDLES

| Code | Description | Cut Out | Finish |
|----------|-----------------------|------------------|--------------|
| MAK18809 | Victorian Gable Plate | Profile Cylinder | Solid Brass |
| MAK11527 | Victorian Gable Plate | Keyhole | Solid Brass |
| MAK22967 | Victorian Gable Plate | Profile Cylinder | Satin Chrome |
| MAK22950 | Victorian Gable Plate | Keyhole | Satin Chrome |



CLASSIC DOOR HANDLES GEORGIAN PATTERN

- Range is manufactured from the highest quality materials to original industry standards and sizes
- With keyhole or profile cylinder cut out
- All handles are supplied complete with spindles and the requisite fastenings

SCROLL HANDLES

| Code | Description | Cut Out | Finish |
|----------|-------------------------|------------------|-------------|
| MAK18885 | Georgian Gable Plate | Profile Cylinder | Solid Brass |
| MAK11657 | Georgian Gable Plate | Keyhole | Solid Brass |
| MAK18861 | Georgian Straight Plate | Profile Cylinder | Solid Brass |
| MAK11640 | Georgian Straight Plate | Keyhole | Solid Brass |



STAINLESS STEEL ARCHITECTURAL DOOR HANDLES

- Door Handles manufactured from Stainless steel
- Supplied with all the required fixings for Standard or Bolt through installations

HANDLE ON BACK PLATE - WITH KEYHOLE

| Code | Design | Cut Out | Finish |
|----------|--------|---------|-----------------|
| MAK28532 | Juno | Keyhole | Stainless Steel |
| MAK28549 | Diana | Keyhole | Stainless Steel |
| MAK28556 | Venus | Keyhole | Stainless Steel |
| MAK28563 | Isis | Keyhole | Stainless Steel |
| MAK28570 | Vesta | Keyhole | Stainless Steel |
| MAK28587 | Ceres | Keyhole | Stainless Steel |



STAINLESS STEEL ARCHITECTURAL DOOR HANDLES

- Door Handles manufactured from Stainless steel
- Supplied with all the required fixings for Standard or Bolt through installations

HANDLE ON ROSE

| Code | Design | Finish |
|----------|--------|-----------------|
| MAK28419 | Juno | Stainless Steel |
| MAK28426 | Diana | Stainless Steel |
| MAK28433 | Venus | Stainless Steel |
| MAK28440 | Isis | Stainless Steel |
| MAK28457 | Vesta | Stainless Steel |
| MAK28464 | Ceres | Stainless Steel |



VICTORIAN BALL MORTICE KNOB

- Range is manufactured from the highest quality and to Original industry Standards and Sizes
- All Handles are supplied complete with Spindles and the requisite fastenings

| Code | Finish |
|----------|--------|
| MAK11565 | Brass |
| MAK23025 | Chrome |



VICTORIAN FLAT MORTICE KNOB

- Range is manufactured from the highest quality and to Original industry Standards and Sizes
- All Handles are supplied complete with Spindles and the requisite fastenings

| Code | Finish |
|----------|--------|
| MAK11558 | Brass |
| MAK23018 | Chrome |



GEORGIAN MORTICE KNOB

- Range is manufactured from the highest quality and to Original industry Standards and Sizes
- All Handles are supplied complete with Spindles and the requisite fastenings

| Code | Finish |
|----------|--------|
| MAK11664 | Brass |





ESCUTCHEONS

- Range is manufactured from the highest quality Solid Brass and to Original industry Standards and Sizes
- With Keyhole or Profile Cylinder cut out
- All Handles are supplied complete with Spindles and the requisite fastenings

| Code | Description | Cut Out | Finish |
|----------|-------------|------------------|-----------------|
| MAK11602 | Victorian | Keyhole | Solid Brass |
| MAK28471 | Brushed | Keyhole | Stainless Steel |
| MAK11701 | Georgian | Keyhole | Solid Brass |
| MAK23032 | Victorian | Keyhole | Satin Chrome |
| MAK28488 | Brushed | Profile Cylinder | Stainless Steel |



MAK11602



MAK28471



MAK11701



MAK23032



MAK28488



ENTRANCE LOCK

- A complete entrance lock kit
- Bronze or chrome finish
- Supplied with all fittings and fastenings, plus 3 matching keys



| Code | Finish |
|---------|--------|
| HON3370 | Bronze |
| HON3380 | Chrome |



ENTRANCE LOCK SETS WITH THUMBTURN & KEY - TULIP TYPE HANDLE

- Manufactured using only quality materials to the Highest Standards
- Carry a 25 year warranty
- Supplied with step by step installation instructions and include an installation template



| Code | Backset | Body | Handle Finish |
|----------|------------|-------|---------------|
| MAK30115 | ADJ60-75mm | Steel | Antique Brass |



ENTRANCE LOCK SETS WITH THUMBTURN & KEY - TULIP TYPE HANDLE

- Manufactured using only quality materials to the Highest Standards
- Carry a 25 year warranty
- Supplied with step by step installation instructions and include an installation template



| Code | Backset | Body | Handle Finish |
|----------|------------|-----------------|-----------------|
| MAK31006 | ADJ60-75mm | Stainless Steel | Stainless Steel |



ENTRANCE LOCK SETS WITH THUMBTURN & KEY - TULIP TYPE HANDLE

- Manufactured using only quality materials to the Highest Standards
- Carry a 25 year warranty
- Supplied with step by step installation instructions and include an installation template



| Code | Backset | Body | Handle Finish |
|----------|------------|-------|----------------|
| MAK30108 | ADJ60-75mm | Steel | Polished Brass |



COMBINATION LOCK SET - DEADLOCK TULIP

- Tulip Knob Style Security Set with Grade 3 Single Cylinder Deadbolt
- Six-way adjustable latch fits all doors
- For exterior locking applications, Entry door



| Code | Descr |
|----------|--------------|
| MAK29027 | Brass Plated |



COMBINATION LOCK SET - DEADLOCK TULIP

- Tulip Knob Style Security Set with Grade 3 Single Cylinder Deadbolt
- Six-way adjustable latch fits all doors
- For exterior locking applications, Entry door



| Code | Descr |
|----------|--------------|
| MAK29010 | Chrome Satin |



NIGHT LATCH

- A quality latch lock kit with a durable brass cylinder lock
- Supplied with all fittings and fixings plus 3 matched keys



| Code | Finish |
|---------|---------|
| HON4040 | Painted |



NIGHT LATCH - HEAVY DUTY

- Manufactured from Die Cast Zinc to the highest standards
- Supplied with easy to read instructions and templates for ease of installation

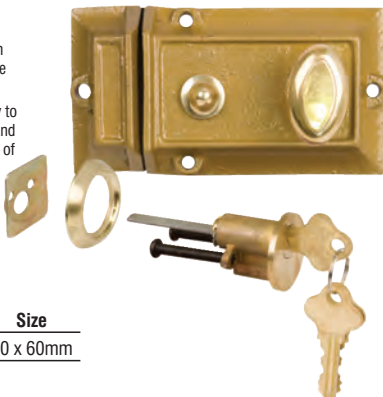


| Code | Size |
|----------|-----------|
| MAK12050 | 90 x 60mm |



NIGHT LATCH - LIGHT DUTY

- Manufactured from pressed steel to the highest standards
- Supplied with easy to read instructions and templates for ease of installation



| Code | Size |
|----------|-----------|
| MAK12036 | 90 x 60mm |



NIGHT LATCH

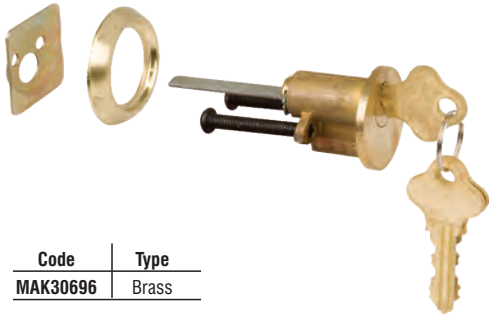
- Economy range night latch
- 3 Keys



| Code | Finish |
|---------|--------|
| TRC2400 | Black |



NIGHT LATCH - REPLACEMENT CYLINDER



| Code | Type |
|----------|-------|
| MAK30696 | Brass |



SECURITY GATE LOCK - DEAD THROW

- 5 Lever
- 2 Keys
- Complete with all fittings



| Code | Finish |
|---------|-------------------|
| HON3365 | Yellow Passivated |



SECURITY GATE LOCK WITH OPEN BOX

- Manufactured from steel
- 7 Lever
- Supplied with the correct type and size of fastening required for ease of installation



| Code | Finish |
|----------|---------------|
| MAK53640 | Chrome Plated |



SECURITY GATE LOCK

- Manufactured from steel
- 7 Lever
- Supplied with the correct type and size of fastening required for ease of installation



| Code | Finish |
|----------|-------------------|
| MAK52049 | Yellow Passivated |



SECURITY LOCK BOX - CLOSED

- For fitting dead lock security gate lock
- Closed box



| Code | Size (mm) |
|---------|--------------|
| HWI2460 | 80 x 64 x 25 |



SECURITY LOCK BOX - OPEN

- For fitting dead lock security gate lock
- Open type box



| Code | Size (mm) |
|---------|--------------|
| HWI2462 | 80 x 64 x 25 |



RIM LOCK - WITH KNOB

- Manufactured from Steel to the highest standards
- Supplied with easy to read instructions and templates for ease of installation
- Supplied with 3 keys



| Code | Body Size | Backset | Handle Finish | Body Finish |
|----------|-------------|---------|---------------|--------------|
| MAK28525 | 155 X 105mm | 40mm | Brass Plated | Black Powder |



RIM LOCK - WITH KNOB

- Manufactured from Steel to the highest standards
- Supplied with easy to read instructions and templates for ease of installation
- Supplied with 3 keys



| Code | Body Size | Backset | Handle Finish | Body Finish |
|----------|-------------|---------|---------------|--------------|
| MAK16607 | 155 X 105mm | 40mm | Plastic | Black Powder |



RIM LOCK - REPLACEMENT KNOB SET



| Code | Descr |
|----------|--------------|
| MAK28518 | Brass Plated |



CUPBOARD LOCK - 2 LEVER

- Manufactured from steel
- Brass plated



| Code | Size |
|----------|------|
| MAK50625 | 50mm |
| MAK05618 | 64mm |
| MAK06318 | 75mm |



CUPBOARD LOCKS PLASTIC COMPLETE WITH ESCUTCHEON

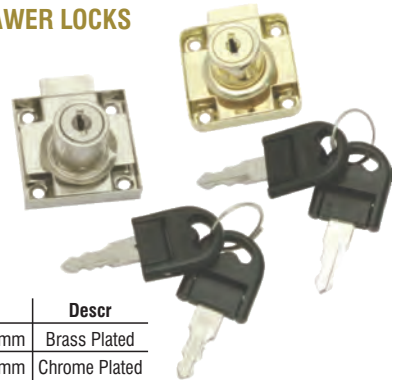


| Code | Size |
|----------|------------------|
| MAK03683 | 20mm Brown |
| MAK03676 | 20mm White |
| MAK04321 | Brown Escutcheon |
| MAK04338 | White Escutcheon |



DRAWER LOCKS

- Manufactured from Mazac

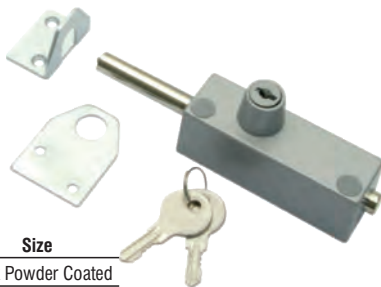


| Code | Size | Descr |
|----------|-----------|---------------|
| MAK19264 | 22 x 19mm | Brass Plated |
| MAK19271 | 22 x 19mm | Chrome Plated |



PATIO DOOR LOCKS

- Supplied with the correct type and size of fastening required for ease of installation

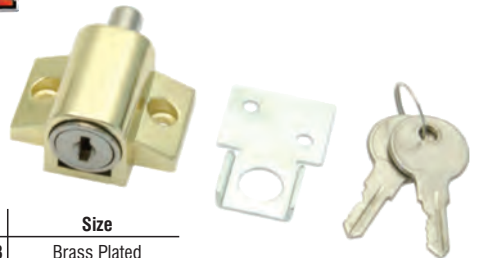


| Code | Size |
|----------|---------------------|
| MAK53948 | Black Powder Coated |
| MAK53916 | Silver |
| MAK53923 | White |



WINDOW PUSH LOCKS

- Supplied with the correct type and size of fastening required for ease of installation



| Code | Size |
|----------|---------------|
| MAK53893 | Brass Plated |
| MAK53886 | Chrome Plated |
| MAK53909 | White |



HASP LOCKS

- Supplied with the correct type and size of fastening required for ease of installation



| Code | Size |
|----------|---------------------|
| MAK53855 | 64mm/Chrome Plated |
| MAK53962 | 74mm/Chrome Plated |
| MAK53879 | 100mm/Chrome Plated |



CAM LOCKS

- Manufactured from Mazac



| Code | Size | Description |
|----------|---------|---------------|
| MAK03003 | 25x23mm | Nickel Plated |
| MAK03010 | 25x23mm | Brass Plated |



PROFILE - CYLINDER ONLY

- Manufactured from Solid Brass for areas of high corrosion
- Supplied with keys



| Code | Size |
|----------|--------------------|
| MAK13750 | 60mm/Chrome Plated |
| MAK13767 | 60mm/Solid Brass |



KEY FOR PLASTIC CUPBOARD LOCKS LOOSE

- Manufactured from Mazac



| Code |
|----------|
| MAK04314 |



KEYHOLE LOCK BLOCKER

- A solid brass lock insert for any standard mortice lock, to prevent lock picking
- Supplied with 2 matched keys

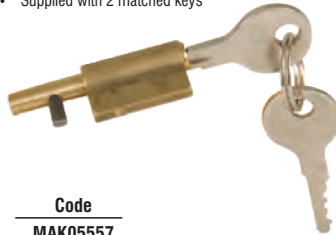


| Code |
|---------|
| HON3130 |



KEYHOLE BLOCKER SOLID BRASS

- A solid brass lock insert for any standard mortice lock, to prevent lock picking
- Supplied with 2 matched keys



| Code |
|----------|
| MAK05557 |



PRODUCT COMPONENTS KEY BLANKS - MA206319

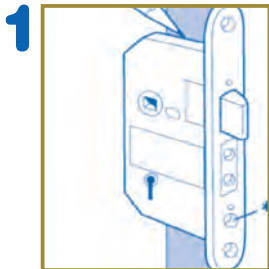
- Solid brass key blanks



| Code | Ref | Blanks for |
|---------|----------|--------------------------------|
| MAS4000 | MA206319 | 30mm, 40mm locks |
| MAS4020 | MA206320 | 50mm, 60mm & rectangular locks |
| MAS4040 | MA206321 | 70mm locks |

HOW TO FIT A MORTICE LOCK

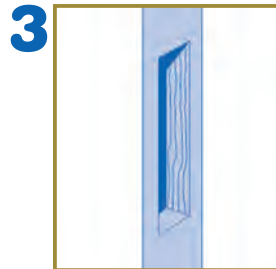
You will need: • Drill and Drill Bits (19mm), • Chisel, • Screwdriver • Pencil



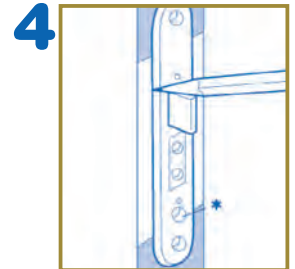
Position lock body as near to the mid-height of the door as possible. Place lock body against door edge and mark top and bottom of lock body on door edge, avoiding joints of cross members in the door.



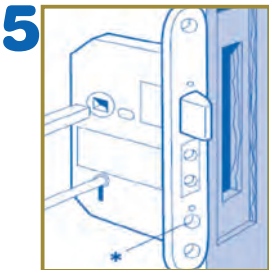
Between these two lines mark the central vertical position (dotted line). Along this vertical line drill a series of overlapping holes to the lock depth. In order to drill to the correct depth apply adhesive tape to the drill bit to the measured lock depth (including the forend and face plate).



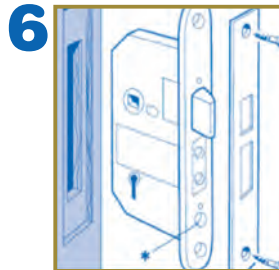
With lock body inserted, draw around forend on door edge - remember to add removable faceplate before tracing outline. Remove lock and chisel recess to accommodate lock faceplate. Place lock in door and ensure a good fit with faceplate flush with door edge



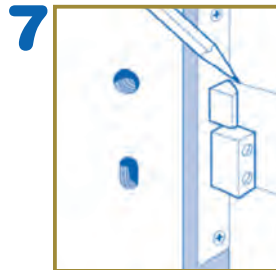
With lock held against door face ensuring faceplate is flush with door edge and in line with lock recess, mark position of the key hole (and spindle). Drill and cut holes on both sides of the door for the key



With faceplate in position secure lock into door with screws provided. Fit escutcheons and/or door handles with spindle cut to suit. Test for easy working operation.



With the door open and the bolt in the locked position, close door gently against door frame. Mark positions of bottom of bolt and top of latch bolt.



Hold box striker up to door frame, ensuring the box section is in line with previous markings. Draw around box section of box striker on door frame. Along the vertical line.



Drill a series of overlapping holes to the box depth. Hold box striker up to frame and draw around edge of box striker. Remove box striker and chisel out so that box striker sits flush in door frame. Secure the box striker using screws in the central or elongated holes only. Test lock for working operation, and adjust position of box striker if required. When aligned correctly, fit the two remaining screws.